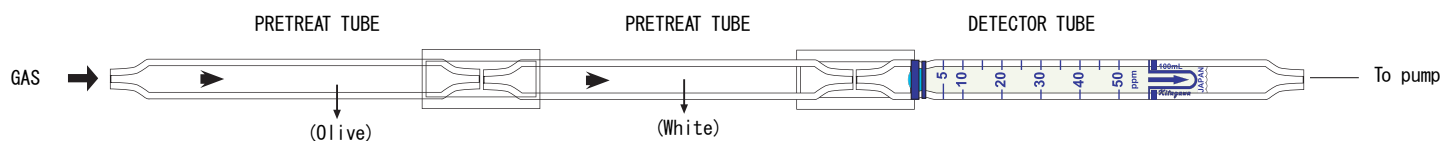


Tube No.
230S

1, 2-DICHLOROETHANE



1. PERFORMANCE

- 1) Measuring range : 5-50 ppm
Number of pump strokes 1(100mL)
- 2) Sampling time : 2 minutes/1 pump stroke
- 3) Detectable limit : 2 ppm
- 4) Shelf life : 1 year
- 5) Operating temperature : 0~40°C (Necessary to store in a refrigerated place;0~10°C)
- 6) Reading : Direct reading from the scale calibrated by 1 pump stroke
- 7) Colour change : White→Purple

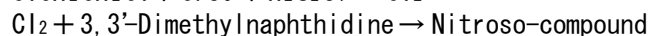
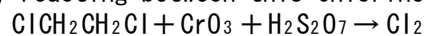
2. RELATIVE STANDARD DEVIATION

RSD-low : 15% RSD-mid. : 10% RSD-high : 10%

3. CHEMICAL REACTION

Chlorine is produced by decomposing with an Oxidizer.

By reacting between this Chlorine and 3, 3'-Dimethylnaphthidine, Nitroso-compound is produced.



4. CALIBRATION OF THE TUBE

GAS CHROMATOGRAPHY

5. INTERFERENCE AND CROSS SENSITIVITY

Substance	Interference	ppm	Coexistence
Nitrogen oxides	Similar stain is produced		Higher readings are given.
Halogens	"		"
Halogenated hydrocarbons	"		"
Hexane FIG. 1	The accuracy of readings is not affected.	100	Lower readings are given.

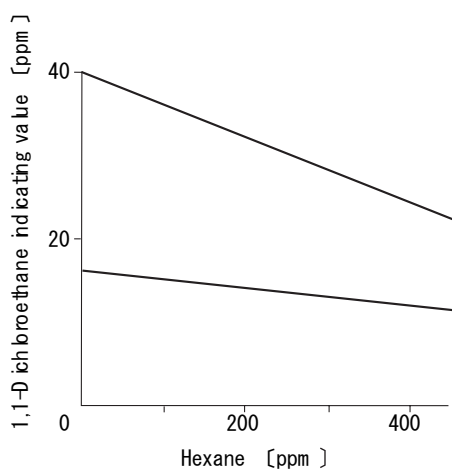


FIG. 1 Influence of Hexane