

1. PERFORMANCE

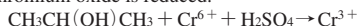
- | | | |
|--------------------------|--|------------|
| 1) Measuring range | : 50-1,200 ppm | 20-480 ppm |
| Number of pump strokes | 1 (100mℓ) | 2 (200mℓ) |
| 2) Sampling time | : 1.5 minutes/1 pump stroke | |
| 3) Detectable limit | : 5 ppm (200mℓ) | |
| 4) Shelf life | : 2 years | |
| 5) Operating temperature | : 10 ~ 40 °C | |
| 6) Reading | : Direct reading from the scale calibrated by 1 pump stroke. | |
| 7) Colour change | : Yellow → Pale blue | |

2. RELATIVE STANDARD DEVIATION

RSD-low : 10 % RSD-mid. : 10 % RSD-high : 10 %

3. CHEMICAL REACTION

Chromium oxide is reduced.



4. CALIBRATION OF THE TUBE

GAS CHROMATOGRAPHY

5. INTERFERENCE AND CROSS SENSITIVITY

Substance	Interference	Coexistence
Alcohols FIG.1	Similar stain is produced.	Higher readings are given.
Ethers	∕	∕
Aliphatic hydrocarbons (more than C ₃)	Whole reagent is discoloured to Pale brown.	∕
Aromatic hydrocarbons	∕	∕
Esters	∕	∕
Ketones	∕	∕
Halogenated hydrocarbons FIG.2	∕	∕

(NOTE)

In case of 2 pump strokes, following formula is available for the actual concentration.

Actual concentration = 2/5 × Reading value

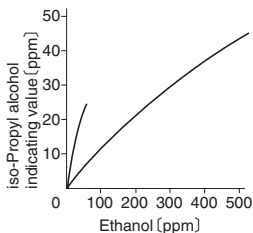


FIG.1 Influence of Ethanol

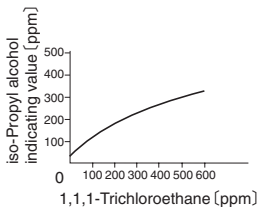


FIG.2 Influence of 1,1,1-Trichloroethane