

## 1. PERFORMANCE

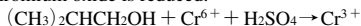
- 1) Measuring range : 5-100 ppm  
Number of pump strokes : 3 (300ml)
- 2) Sampling time : 4.5 minutes/3 pump strokes
- 3) Detectable limit : 2 ppm
- 4) Shelf life : 2 years
- 5) Operating temperature : 0 ~ 40 °C
- 6) Temperature compensation : Necessary (See "TEMPERATURE CORRECTION TABLE")
- 7) Reading : Direct reading from the scale calibrated by 3 pump strokes
- 8) Colour change : Yellow → Pale blue

## 2. RELATIVE STANDARD DEVIATION

RSD-low : 10 % RSD-mid. : 10 % RSD-high : 5 %

## 3. CHEMICAL REACTION

Chromium oxide is reduced.



## 4. CALIBRATION OF THE TUBE

GAS CHROMATOGRAPHY

## 5. INTERFERENCE AND CROSS SENSITIVITY

Substance	ppm	Interference	Coexistence
Alcohols FIG.1		Similar stain is produced.	Higher readings are given.
Toluene FIG.2	200	Whole reagent is changed to Pale blue.	∕
Hexane	1,000	The accuracy of readings is not affected.	The accuracy of readings is not affected.
Trichloroethylene	∕	∕	∕
Ethyl acetate	∕	∕	∕

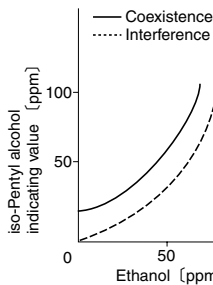


FIG.1 Influence of Ethanol

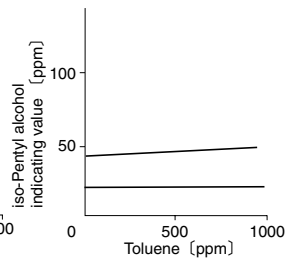


FIG.2 Influence of Toluene

## TEMPERATURE CORRECTION TABLE

Scale Readings (ppm)	True Concentration (ppm)				
	0 °C (32 °F)	10 °C (50 °F)	20 °C (68 °F)	30 °C (86 °F)	40 °C (104 °F)
100	—	—	100	80	70
80	—	—	80	65	55
60	—	83	60	50	45
40	90	50	40	33	30
20	32	23	20	16	15
10	14	11	10	9	8
5	5	5	5	5	5